

Profile & Statement of Needs



St Laurence's Long Eaton



Holy Trinity Ilkeston

*Information for applicants for the posts of
Vicar of St Laurence's and Priest-in-Charge of Holy Trinity*



Two Society Parishes in the care of the Bishop of Ebbsfleet



In the Diocese of Derby

CONTENTS

Introduction and Summary	3
The Priest we are looking for	5
The Bishop of Ebbsfleet writes	6
The South East Derbyshire Area Dean writes	7
Contacts	8
Our People – Clergy and Laity	9
St Laurence’s Vicarage	10
Holy Trinity Ilkeston	12
Information about the parish, church life, activities etc.	
St Laurence’s Long Eaton	22
Information about the parish, church life, activities etc.	
Maps	32

This Profile was originally prepared a number of months ago and was updated with a few minor amendments in January 2020

INTRODUCTION & SUMMARY

We are two distinct and separate parishes with different identities, PCCs and finances. Although we are located about seven miles apart we have been closely associated for many years, and for about the last ten years have shared an Incumbent and this arrangement is set to continue.

We are therefore looking for a full time stipendiary Priest who will be the Vicar at St Laurence's and the Priest-in-Charge at Holy Trinity.

As the only two Society parishes in the Deanery it is our traditional catholic faith which binds us together rather than any particular community affinity. Both parishes passed resolutions under the House of Bishops' Declaration on the Ministry of Bishops and Priests about three years ago and we are under the care of the Bishop of Ebbsfleet. We do, however, have excellent relationships with the Deanery and the Diocese with whom we seek to work in a spirit of mutual flourishing and we are engaging positively with the new Bishop of Derby, Libby Lane, and the senior diocesan team.

There is a **strong existing Ministry Team** consisting of two licensed Priests and two retired Priests who have the Bishop's Permission to Officiate. One of the Licensed Clergy is 'House for Duty' and lives in Holy Trinity Vicarage and the other is more focused on St Laurence's. Similarly one of the retired Priests regards Holy Trinity as his place of worship whilst the other is more regularly at St Laurence's. All four, however, very much regard themselves as being in a team and help out at each church as required.

It is envisaged that the new Incumbent will have his primary focus at St Laurence's but will have involvement and visibility at Holy Trinity as well and will be seen there on a regular basis. He will live in St Laurence's Vicarage which is close to the church.

In addition to the Ministry team there is **supportive laity** in both parishes: in administration, finance, pastoral and social work, outreach and worship. Holy Trinity has particularly strong and experienced lay team; at St Laurence's there have been a number of changes recently and both Churchwardens are new to the role. There are two Wardens at each church and a full complement of PCC members. There are good relationships among the teams in both locations and between the two parishes and there are regular social activities.

OUR VISION

We are traditional catholic parishes and the celebration of the Mass is therefore central to our life and will continue to be so. But we want to share our Eucharistic life with the wider community and we therefore **want to be more effective in outreach and mission in our parishes**, and beyond. We want to be a beacon of light that enables greater involvement with the communities we serve. We are actively engaged on a programme of 'Flourishing and Growing' being led by Fr Giles and this is very much a work in progress. We have done this jointly although each parish has different issues and challenges. **We need help in giving this some fresh light and impetus and we would want this to be a priority for our new Incumbent.**

OUR PARISHES

St Laurence's is in the centre of Long Eaton and is an important landmark in the town and has involvement in civic functions. It stands in a prominent position in the Market Place and has good visibility in the town. There is a church school with which the parish has strong links and we would want the new Priest to welcome being closely involved.

Holy Trinity is not the main town church in Ilkeston being squeezed between two larger parishes and its geographical location is challenging. Holy Trinity particularly, but also St Laurence's to a lesser extent, attract many from outside the parish. We each strongly identify with our own towns and relate to the local community and are therefore somewhat different in character.

We perceive that there is a need for both parishes to become more closely involved with the other churches in their own localities, and indeed within the Deanery, so as to further community involvement and mission and although recognition of this has led to some tentative steps being made we would look to our new Priest to help in advancing this.

THE AREA

Long Eaton and Ilkeston are the two principal towns in the Borough of Erewash which is situated along the Derbyshire/Nottinghamshire border between the cities of Derby and Nottingham. Long Eaton identifies closely with Nottingham; Ilkeston with both cities. The industrial heritage of the area still accounts to some extent for the identity of the communities: Ilkeston was based principally on coal mining and iron, Long Eaton principally on textiles. The heavy industry has now disappeared and whilst both towns have some light industry and services both places serve as commuter towns for the neighbouring cities. There are all the normal services and facilities locally and a wide range of educational establishments. Both Derby and Nottingham are within eight to ten miles and are easily accessible and offer a much wider range of amenities. This is a centrally located part of the country and there are excellent transport links, with a number of mainline stations, the M1 and East Midlands Airport all situated close by. The area is surrounded by some beautiful countryside and the Peak District National Park is about 20 miles away.

THE PRIEST WE ARE LOOKING FOR

We are seeking a full time stipendiary Priest as Vicar of St Laurence's Long Eaton and Priest-in-Charge of Holy Trinity Ilkeston.

The new Incumbent will be committed to the Catholic tradition of the Church of England and will be a Priest of the Society and/or a member of the Society of the Holy Cross, or willing to become a member.

We need someone who:

- Recognises the centrality of the Sacraments in our church life and will maintain and value the existing liturgical and spiritual traditions of each parish. We need a willing teacher and preacher able to **nurture and encourage people in the faith**.
- Is a good team player who will work collaboratively and sympathetically with both clergy and the laity so he can **strengthen and empower** them.
- Is a good communicator who is able to relate easily to people of all ages and circumstances – someone who is approachable, open and a good listener and will be diplomatic, tolerant and understanding of the differences he encounters among us so that he can work **to develop and grow the parishes**.
- Will encourage and develop both individuals, and the parishes corporately, helping to **further our vision** and plans for the future especially in the areas of **mission, growth and outreach** so that we can continue to flourish.
- Whilst recognising the place and value of all age groups and be welcoming to everyone, especially newcomers and enquirers, we will need his help particularly to encourage families, **nurture children and young people** and to be able to effectively connect with them. He will also welcome involvement at St Laurence's Church of England Primary School and other schools in both parishes.
- Will be able to commit himself to these two different parishes in separate locations and recognise where strengths and weaknesses lie and be willing to **give support where and when required**.
- Will happily work with and develop relationships with other parishes in our separate towns and within the Deanery and at Diocesan level and be fully on-board with the concept of **mutual flourishing** and work for that end, maintaining and indeed improving on the good relationships we have already established.

THE BISHOP OF EBBSFLEET WRITES

The two parish communities involved in this appointment, together with their clergy, eagerly await their new pastor. They have for many years been part of the Ebbsfleet family, and sit right on the intersection with the Sees of Beverley and Richborough in the East Midlands. Working together to prepare this profile has increased their readiness to enter into the next period of their life. Their bond is their common commitment to the catholic heritage of the Church of England, which gives them a shared understanding of the Church's life and mission, and their invitation to new disciples.

Writing as the bishop with oversight in the parish (under the Bishops' 2014 Declaration on the Ministry of Bishops and Priests) I want to say that the priest we are looking for is a priest who understands their ministry as an apostolic ministry to 'build churches' — to *build up* the people of God in faith and prayer, to *draw them together* for the work of mission and service in the local community, and to be *communities of hope* further afield. He will be committed to the centrality of prayer, the sacraments, the scriptures and practical service of the needy as the key aspects of the Church's life.

Therefore we believe we need a person who is an effective team player and communicator: someone who can listen, pray, and reflect; can encourage, motivate and challenge; who can work with others in and beyond the parishes; and who sees *unity*, both prayerful and practical, as the most potent witness to the love of Christ among our neighbours. We want to express an attitude of mutual flourishing in our own life as well as in effective relationships across our deanery and diocese.

And we want a person at ease across the church family. The church has a perennial responsibility to encourage the faith of young people, inspiring them with the truth and joy of the gospel. It is also true that our society is ageing, and we want to increase the opportunities to strengthen the witness of older members among their own generations. Both of these are priorities for us, and we look for a priest who is energized by finding ways to make our outreach more effective.

If we can recognize these things in a priest, and in their experience in ministry thus far, we are confident of our own capacity and readiness to respond and support our priest. And we hope that you will want to apply, in the hope that God may be calling you to serve here.

In the Name of the lord:



+ Jonathan Ebbsfleet

THE SOUTH EAST DERBYSHIRE AREA DEAN WRITES

The parishes of Holy Trinity Ilkeston and St Laurence's Long Eaton play a vital part in the life and worship of the deanery and have a good relationship with the deanery leadership. The churches sit within the South - East Deanery and have helped in supporting neighbouring churches. In October 2016 we adopted a set of priorities as a deanery following consultation that identified five mission areas for action that focussed on:

- i: Children and young people;
- ii: Community and social outreach;
- iii: Working with the elderly;
- iv: Working with the 'middle years' (18 - 60-year olds)
- v: Spirituality and discipleship.

All synod meetings have focused on one of those strands with additional events held to develop ideas, promote good practice and share what is working well. We have a regular deanery newsletter sharing news and encouragement. We benefit from a part time administrator who has proved useful in both deanery work and supporting local parishes with administrative tasks.

The richness of diverse churchmanship in the deanery produces mutual learning, respect and good relationships across church traditions, celebrating what we share rather than focusing on differences. Chapter meets regularly and is a supportive environment of learning and encouragement and it is hoped that any new incumbent would play their part in this forum.

In the deanery there are plans for large areas of new housing on brown field sites without the appropriate support structures such as schools put in place to accommodate this and local schools and GP services are under increasing pressure. This presents the churches with great opportunities, but we have limited resources stretched thinly. There is desire in the deanery for growth and real examples of stepping out beyond the traditional church model which we are all learning from. We are looking for a parish priest who will enable working together, mission and outreach to these communities in Derbyshire, and who will contribute to the life of the Diocese. We are committed to ensuring that whoever is appointed is properly supported.

Revd. Karen Padley

South East Derbyshire Area Dean

CONTACTS

FOR INFORMAL CONVERSATION CONTACT:-

Bishop Jonathan: 0118 948 1038 office@ebbsfleet.org.uk

Or
Archdeacon of Derby: Christopher Cunliffe: 01332 388676 archderby@derby.anglican.org

PARISH REPRESENTATIVES:

St Laurence's: Simon Dew: 07970 397711 simondew.46@gmail.com Mary West: 07985 559591 west.woodside@outlook.com

Holy Trinity: Nicky Bailey: 07809 680034 nickybailey1938@gmail.com Geoff Raby: 07905 323116 geoffreyraby@aol.com

FOR APPLICATION FORM: <https://derby.anglican.org/en/about-us/vacancies.html>

USEFUL LINKS:

www.holytrinityilkeston.org.uk

www.st-laurence.net

<https://derby.anglican.org/>

<http://www.ebbsfleet.org.uk/>

www.st-laurence.derbyshire.sch.uk/ (St Laurence Church of England Primary School)

OUR PEOPLE – CLERGY AND LAITY

We have a strong existing Ministry Team with four Priests serving both parishes.

Fr Tom Barnfather SSC Associate Priest	He has special responsibility for Holy Trinity and lives in the Vicarage there on a House-for-Duty basis.
Fr Giles Orton SSC Assistant Curate	He is a self-supporting non-stipendiary Priest. Fr Giles was ordained in June 2016 following a successful career as a solicitor.
Canon Michael Brinkworth SSC	Fr Michael is retired and has the Bishop's Permission to Officiate. His principal focus is at St Laurence's.
Fr Malcolm Ainscough SSC	He retired in 2017 from another parish in the diocese and has the Bishop's Permission to Officiate. His principal focus is at Holy Trinity.

There is willing support from the laity at both parishes with two Churchwardens at each and a full complement of PCC members and all the usual PCC officers. At St Laurence's a long standing Warden died suddenly and unexpectedly last autumn and the other Warden felt it necessary to resign because of failing health. However both positions were filled fairly quickly but this has presented some challenges and resulted in some temporary disruption. At Holy Trinity there is strong and experienced lay support.

At Holy Trinity there is a particularly strong team of servers with involvement from children. This is led by the Sacristan, David Hudson, who also leads the Walsingham Cell and has been organising parish pilgrimages there for over fifty years. St Laurence's also has a dedicated team of servers.

There is strong support for social and community activities at both churches and among children and young people – a Youth Group at St Laurence's and a Sunday school at Holy Trinity.

ST LAURENCE'S VICARAGE

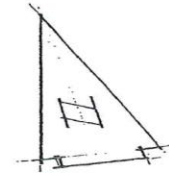
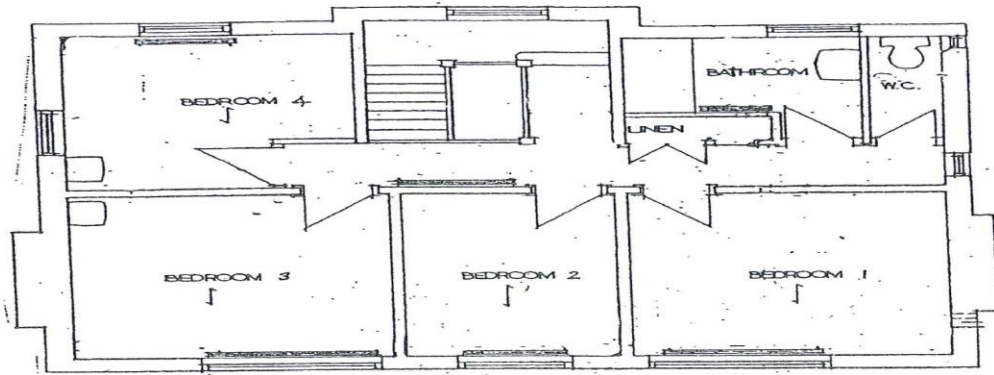
This is situated very close to the church and is in the centre of the town. Downstairs, there are three reception rooms (one of which has been used as a study by previous Vicars,) one large kitchen/diner with an adjoining utility room. Upstairs there are four bedrooms and a bathroom. There are 2 W.C.s. in total. The front of the house is on a fairly busy road (but not a main road) but to the rear is a large, peaceful garden which has been well tended by the previous occupants who were keen gardeners. There is also a garage to the rear of the property. There is a limited garden area at the front of the house with a small driveway.

The property was constructed in 1951. The boiler was replaced in 2009 and the property has cavity wall insulation and 250mm loft insulation. All windows are double glazed UPVC.

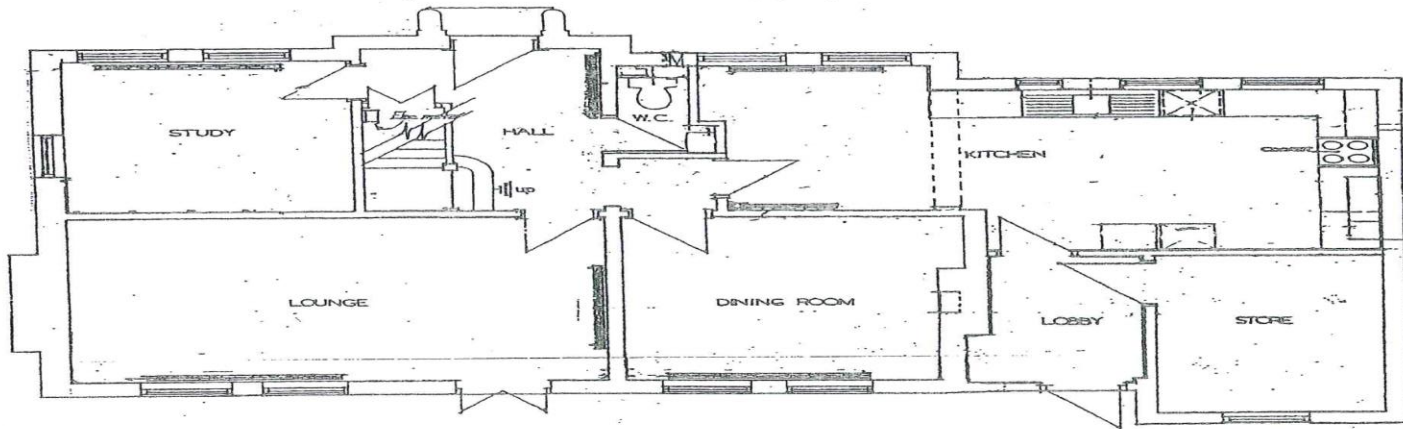
This is a large building with ample room for a family if required. It is very accessible to all the local amenities and there are schools within walking distance. There are also local canal walks and a very large park close by.

A floor plan is given on the next page.





FIRST FLOOR



GROUND FLOOR

LONG EATON ST. LAURENCE

HOLY TRINITY ILKESTON

Some information about the area

The town of Ilkeston is located in Derbyshire along the border with Nottinghamshire and has a population of about 38,000. It has an individual character of its own with an enterprising spirit and with what might be called a 'blue collar' culture and is one of the few places where the East Midlands dialect can still be heard. The people tend to be direct and down to earth and generally proud of their town and some may say this is accompanied by a certain insularity. The town itself has a number of social challenges and, like many other towns, has seen a decline in town centre shops and other facilities and some parts are in need of regeneration. Although the town does have a strong independent quality it also identifies with both Nottingham (7 miles away) and Derby (10 miles away). Both cities are important regional centres and between them have a wide variety of cultural and entertainment venues, educational establishments and many other amenities.



Ilkeston enjoys easy access to the M1 motorway and there is a mainline station at Ilkeston as well as stations at Derby, Nottingham and East Midlands Parkway. East Midlands International airport is within 20 minutes travelling distance and has a wide range of national and international destinations available. There are good local transport links to both Derby and Nottingham. Although the town is urban and industrial it is surrounded by attractive countryside and the Peak District National Park is about 20 miles away.

This part of Derbyshire has a strong industrial heritage and Ilkeston became prosperous at the end of the 19th century on the back of the coal mining, iron and textiles industries. These traditional industries have now largely been replaced by small manufacturing and service and transport enterprises, but textiles remain mainly in the form of upholstery and lingerie manufacture. There are large numbers of people who commute to Nottingham and Derby.

The town itself has all the usual facilities, amenities and educational establishments. The proximity of two large cities provides much more. There is easy access to the surrounding countryside including a large country park (Shipleigh Country Park) as well as a navigable canal.

(The picture shows Ilkeston marketplace with St Mary's church, the main town centre church, in the background)

The community

The parish itself is located to the north of the town centre (about two thirds of a mile away). It is geographically small and is between the main town and housing estates to the north. It is semi-suburban in nature and lacks any unique identity of its own and does not correspond to any local authority area. Because of this there is very little 'community' feel in the parish itself which makes 'community' involvement challenging. St Mary's, Ilkeston's main church, is located in the Market Place and is the civic church for the town. About half the parish is residential; the rest includes a large industrial estate, and a number of other businesses as well as shops and supermarkets.

The housing is mixed but predominantly terraced and semi-detached. There have however been some extensive new developments over recent years and more are planned and the result has been to improve the housing stock of the area. There is a significant new development underway adjacent to Holy Trinity Vicarage. We see the resultant increase in population from these developments as an opportunity for mission within the parish which we need to develop.

The socio-economic makeup of the parish is mainly in groups 3 to 7 (as defined by the Office of National Statistics – equivalent to C and D under the previous classification) and there is only a small BAME population. The parish borders Cotmanhay (in the parish of Cotmanhay and Shipley) which is one of the most socially deprived areas in the country.

Because of its small size, there are a limited number of amenities and facilities within the parish itself, but much more in the town of Ilkeston generally. The following are all located within the parish:-

- Charlotte Street Infants School and Granby Junior School.
- A leisure centre with swimming pool.
- A Squash Club.
- A pub and a number of restaurants and takeaway establishments.
- A Tesco Extra Store - the parish boundary goes through the middle of it.
- Aldi Supermarket.
- The Arena Church: a Pentecostal-type Christian centre which offers a wide range of facilities to the wider community.

A little history

The parish was formed in the 1880s out of the neighbouring parish of St Mary's to cater for what was then a thriving industrial community based mainly on coal mining and there were at that time a number of pits located in the parish. It was also formed out of the enthusiasm of the Anglo-Catholic revival of those times: a tradition that remains unbroken to this day. It was known locally as 'The Miners' Church' and was built to serve a working community with a considerable amount towards the cost coming from contributions from the public. The church saw a period of decline and was in danger of being closed down in the 1980s but was reprieved and has slowly built itself up.

After the retirement of the last Vicar of Holy Trinity in 2010 we have shared our Incumbent with St Laurence's Long Eaton – he being the Vicar there and Priest-in-Charge at Holy Trinity. Our first Priest-in-Charge resigned in 2011 after only a few months (to go to the Ordinariate). Since then there has been a period of stability and growth and we are now in a much better place and approach the future with confidence and hope.

The church building

The church was built in the 1880s in the Gothic style and is constructed in brick with coursed rock-faced sandstone facing, with ashlar window surrounds. It is not a listed building; this has proved to be something of a disadvantage in the past when trying to raise funds for building works. It is located with roads to 3 sides, there being a garden to the south. There is limited on-road parking available, some of it restricted on weekdays but not on Sundays. This awkward position can sometimes be a real difficulty when organising events.

In the early 1980s the 3 western bays of the nave and the north aisle were partitioned off to form a church hall. This has left the church consisting of the chancel and a small truncated portion of the nave, leaving it feeling somewhat out of proportion but with an intimate atmosphere. The church therefore is not spacious and we can struggle to get everyone in on the occasional big events. It therefore does not easily lend itself to non-worship events such as brass band or choir recitals.

The church can seat a maximum of about 150, although some of that would be behind pillars with obstructed views of the sanctuary and in a side chapel outside the main body of the church. The main body of the church can seat about 90 comfortably but there would still be restricted visibility for some; our normal Sunday congregation of about 35/45 is easily accommodated. There is access to the church and hall for the disabled although this is in need of improvement.



There are two outstanding features of the church which are worthy of a particular mention. Firstly the east window - the Window of the Nativity; a fine window installed in 1913 by Bernard Sleight who was associated with the Birmingham School of Art and shows the influence of Christopher Whall. Secondly the organ: this is a Harrison and Harrison and was installed in 1909 and is still in reasonably good working order and has had a number of improvements, most recently a new blower.

The church hall is equipped with a kitchen (completely refurbished just a few years ago) and toilets and is used for refreshments after Sunday Mass and for other social events. A number of other groups also pay to use the hall and we have a Brownie and Rainbow group each week.. The hall provides a very useful facility and there is still scope for more use by the wider community.

Apart from the main church there are two side chapels: the Lady Chapel, where weekday masses are said, and a smaller Magdalene Chapel (used only occasionally) and which is mainly used for additional seating when the church is full (e.g. when there are Baptisms, Funerals etc.)

There is a garden to the south which slopes away and this is maintained on a regular basis by a mixture of paid and volunteer help and is an attractive feature.

The interior of the church is attractive and in generally good order. Over the course of the last few years it has been completely redecorated and re-carpeted. We have also carried out a programme of repairing and refurbishing the seating within the church and some work in this regard is still to be done. A new central heating boiler was installed in 2012 and a completely new sound system was put in place in 2016

In recent years a comprehensive programme of building works has been carried out externally including the replacement of all rainwater goods, roof repairs, installation of a new lightning protection system and drainage improvement. The most recent Quinquennial Inspection was carried out in November 2015 and the work recommended in the report has largely been completed.

At present there are two issues being addressed: the provision of further storage within the church hall and looking at how heating can be improved.



Church life

There are 59 people on the Electoral Role (with the majority being non-resident) and the parish has a population of about 4000.



Worship at Holy Trinity is dignified and firmly in the Catholic tradition, with Sung Mass at 11 o'clock being our main Sunday service. The service is based on Common Worship with permitted additions from the Roman Missal and incense is used. The attendance is normally between 35 and 45. On every third Sunday of the month there is Sung Evensong and Benediction at 6 pm and there is the same at St Laurence's on the first Sunday. These are regarded as 'joint' services and there are people attending from both churches. There is a regular attendance of about 12 people.

In addition we have a Mass on Tuesday mornings at 9.30 (preceded by a short service of Morning Prayer at 9 am) and on Thursday Evenings at 7 o'clock – the attendance at each service is about 10/12. There is also a regular 'Walsingham' Mass on the first Saturday of the month at 9.30 am followed by breakfast in the church hall. Other Masses are celebrated on principal feast days and there is a full programme of services during Lent and Holy Week.

The congregation is mainly middle aged and elderly although there are typically 4 to 6 children or young people on a Sunday. Our 'Worshipping Community' as reflected in our Statistics for \Mission report for 2018 is as follows:

Children (0-10)	4
Young people (11-17)	2
Adults (18-69)	21
Adults (70+)	41
Total	68

Music plays an important part in our services and we have a regular **Organist**, Peter West and also the services once a month of Jean Jarvis. We are affiliated to the Royal School of Church Music. We have a Harrison & Harrison organ which is generally in good order and a new blower was fitted in 2013 at a cost of £6500. Peter is concerned to reduce his commitment to playing the organ in view of his age but is content to still be fully involved until new help is found.



We have an experienced and dedicated team of **Servers** (led by our Sacristan David Hudson who has been associated with the church for over 60 years) and there are usually at least 4 robed and in the sanctuary. The team includes a number of children and young people.

Occasional Offices during 2018 were as follows:-

Baptisms: 5
Funerals: 4 (one at crematorium only)
Weddings: 1

We have over the last couple of years established a **Sunday School** which takes place each week and attendance is usually 2 to 4 children and this is something which we are wanting to develop further. This has been run by Fr Tom's wife Rosie and Gemma Shelbourne. We also have the **Brownies** at Mass once a month for their Church Parade. This is also attended by parents, grandparents etc. The Brownies use the church hall on Monday evenings and we have developed a good relationship with their leaders. A separate Rainbow Group have also recently started using the church hall.

Home Communions are given to the elderly as the need arises both in their own homes and in Residential Care Homes within the parish and beyond.



There is further involvement in both Deanery and Diocesan matters with one of our Churchwardens, Nicky Bailey, being the **Safeguarding Link for the Deanery**. Furthermore, Fr Giles sits on the **Diocesan Synod** and is also **Chairman of Forward in Faith for the diocese**.

We have had links with the nuns at the **Community of the Holy Cross** at Costock for many years. This is an Anglican Benedictine Community and our clergy celebrate Mass there from time to time. We also have regular 'quiet days' there usually during Advent and Lent.

Church activities

We endeavour to have a busy social calendar, organised by a committed **Social Committee** to help with fund raising, but getting local involvement can be challenging because of our location and the lack of any community cohesion. Our regular events include the following:-

- Christmas – a supper and children’s event
- Shrove Tuesday Supper
- Summer Fair
- Harvest Supper
- Musical Recitals

We also have a **Friends and Neighbours Group** which meets every month with either an invited speaker or a trip out.



We are anxious to participate in events where there is greater engagement with the wider community but again this has proved to be very challenging. There is a need for this to be further developed

There is a strong **Walsingham Cell** with regular social events and an annual pilgrimage to the shrine led by one of the clergy team. This Pilgrimage is done in close co-operation with the Cell at St Laurence’s and also attracts people from other churches, including Methodists and Roman Catholics. The pilgrimages are organised by our Sacristan and Head Server, David Hudson, who recently celebrated 50 years of organising these.

A weekly **newsletter** is produced which goes on our website. This not only acts as a ‘pew sheet’ but gives information about events and developments in the parish.

We are conscious of the need to engage with social media and as well as our **website** (which was completely updated about 3 years ago) we have an active **Facebook** page.

In 2009 we formed a separate charity; **Friends of Holy Trinity Ilkeston**, to act as a bridge between the church and the community and to raise funds. It runs a Private Members **Lottery** (and has been successful in raising in excess of £4000) and also features on **easyfundraising.com** where funds are raised via online shopping.

We also have a **Cleaning and Maintenance** group who look after the tidying and cleaning of the church and ornaments and the provision of flowers.

Outreach and community involvement

We have two schools within the parish, neither of which are church schools. We have a good relationship with **Charlotte Street Infants School** where there has been strong involvement for many years and although members of the church community have been Governors in the past there is currently no such formal link. Both schools are well disposed towards us and welcome being able to bring pupils along to events from time to time. For the last few years **Granby Junior School** also have had their end of year event at the church with family members as well as pupils being in attendance. We feel that both these links should be developed further.

We are regular visitors, including for Home Communion, to a number of Residential Care Homes in the area and value our ministry to the elderly which extends beyond the parish to members and connections of our church community.

The local **Brownies** and a **Rainbow** group use the church hall weekly and the Brownies for their monthly Church Parade and there is a mutual feeling that they are very much part of the life of the parish and part of the church family.

The hall itself is advertised as a community facility and we endeavour to get as much use as possible but it is somewhat restricted by the lack of parking. However, we do have a number of events such as children's parties, Zumba, yoga classes etc. from time to time.

During the last year we have had a new member of the congregation, David Allen, who is a presenter on **Erewash Sound**, our local community radio station, and he is helpful in giving some wider publicity to the church. This is a not-for-profit community interest company and David is also Chairman of the Board.



We recognise that it is an **important part of our ministry to endeavour to reach out to the local community** and we are constantly on the lookout for opportunities to improve and develop this further. It has to be recognised however that the parish does not constitute a recognisable and coherent 'community' and this combined with our location makes this challenging. We continue to give this a lot of thought and focus and have some new ideas which we will be trying this year. This is definitely something which we recognise as being an important part of our mission and where we need help in improving what we do.

Parish finance

A brief summary of our financial position for the last three years is given below:

Item	2018	2017	2016
Total income	43055	44523	44441
Giving + tax reclaim	26206	30623	32040
Common Fund	17953	15300	15300
Other expenses	24995	28634	35271
Surplus (Deficit)	107	589	(6130)
Total of funds held	14621	14460	13927

Full audited accounts can be supplied if required.

For a number of years now our income has been sufficient to meet our outgoings without the need to draw on reserves, which are in any event small. We would like to be able to pay our Common Fund in full but this has not proved possible for the last few years. We were, however, able to increase this in 2018 when we paid 85% and will endeavour to increase this percentage as and when possible.

During the course of 2018 the PCC and congregation engaged with the second phase of the '**Giving for Life**' programme and stewardship was addressed in a number of ways. The PCC also adopted the '**Parish Giving Scheme**' and it is hoped that the measures we have taken will serve to strengthen our finances.

We have been fortunate over the last few years in receiving a number of generous donations and legacies and generally money has been found when it was needed.

However, new ways of funding need to be found. 'Friends of Holy Trinity Ilkeston' has already had success in raising funds and contributing towards church costs (e.g. new notice boards) and a widening use of this separate charity is something that will be explored moving forward.

Despite our somewhat weak financial position, we place much importance on our own charitable giving and support a number of causes, and also contribute towards diocesan causes.

Our strengths and weaknesses

Strengths

- The maintenance of a regular pattern of worship on Sundays, weekdays and throughout the course of the Church's calendar.
- Dignified worship, with music on Sundays and use of incense, supported by a strong team of servers.
- A loyal and regular congregation.
- Strong support from the laity in all areas
- A strong social programme with good lay involvement.
- A growing involvement from families, young people and children

Weaknesses

- Despite some growth, there is still weak attendance from families and young people (except once a month with Brownies).
- A lack of a real local 'community' and therefore a low profile in the area.
- A challenging geographical location.
- A financial position which needs strengthening.

The way ahead

Whilst the celebration of the mass is central to our life at Holy Trinity we recognise that we have a wider pastoral mission. We are therefore seeking to develop:

- Developing a clearer vision for the future.
- Growing church attendance combined with spiritual growth.
- Attracting more families and young people and strengthening our relationships with local schools.
- Reaching out to the community especially the disadvantaged.
- Raising the profile of the church and working more collaboratively with other local churches.
- Making ourselves more accessible and welcoming – spiritually, physically and digitally.
- Improving our financial position.

We are very much looking forward to working with a new Incumbent to help us achieve our vision, hopes and aspirations for the future.

ST LAURENCE'S LONG EATON

Some information about the area

The town of Long Eaton is located in Derbyshire along the border with Nottinghamshire and has a population of about 37,760. Although the town does have a strong independent character it also identifies with both Nottingham (7 miles away) and Derby (8.5 miles away). Both cities are important regional centres and between them have a wide variety of cultural and entertainment venues, educational establishments and many other amenities.

Long Eaton enjoys easy access to the M1 motorway and there is a mainline station at Sawley but called Long Eaton Station. as well as stations at Derby, Nottingham and East Midlands Parkway. East Midlands International airport is within 20 minutes travelling distance and has a wide range of national and international destinations available. There are good local transport links to both Derby and Nottingham. Although the town is urban and industrial it is surrounded by attractive countryside and the Peak District National Park is about 20 miles away.

This part of Derbyshire has a strong industrial heritage and Long Eaton became prosperous at the end of the 19th century by making the world renowned Nottingham Lace and it was very much a textile area with many links to the Knitwear and Elastic industries. These traditional industries have now largely been replaced by small manufacturing, service and transport enterprises, but textiles remain mainly in the form of upholstery (with Long Eaton being one of the most known furnishing areas in the Country) and lingerie manufacture. There are large numbers of people who commute to Nottingham or Derby.

The town itself has all the usual facilities, amenities and educational establishments. The proximity of two large cities provides much more. There is easy access to the surrounding countryside including a large country park



(The picture shows the parade in the market outside the church on Royal Navy Day).

The community

The parish itself is located in the centre of the town. It is both urban and suburban in parts and comes under the Erewash Borough Council. We are the main Parish Church in the town and we are proud of our links to the British Legion and the Air Cadets. We are central to the Remembrance Day activities and also hold the Poppy Concert which is held at the start of the Poppy appeal. We are the go-to Church for the Council and we are asked to be the 'wet weather' venue when outside events occur.

The housing is mixed with many types of housing and we are delighted to house one of the best public schools in the area - Trent College.

There have also been some extensive new developments over recent years and more are planned.

There is also the proposed construction of the HS2 which will have a big impact on the town and has met with a lot of local opposition.

Long Eaton has a higher rate of homeowners or mortgagees which suggests that the area is relatively affluent.

The socio-economic makeup of the parish is mainly in groups 3 to 7 (as defined by the Office of National Statistics – equivalent to C and D under the previous classification) and there is only a small BAME population. The parish borders Sawley in the South and Breaston in the west with many outlying villages.

Being centrally located in the town, there are a number of amenities and facilities within the parish itself.

- St Laurence C of E Academy. Brooklands School. Long Eaton School. Grange School.
- A leisure centre with swimming pool.
- A major Gym complex (on the same street as the vicarage)
- Pubs and a number of restaurants and takeaway establishments.
- A Tesco Extra Store.
- Aldi Supermarket.
- Asda Store.
- Many local small businesses
- A beautiful park and canal area.
- There is also a small theatre and plenty of am-dram activities within the town.
- The Oasis Church, Methodist and Baptist Church, United Reformed Church and also a Jehovah's Witness Church

A little history

In 2011 our Priest left to join the Ordinariate and we entered into our interregnum for the next 18 months. We were blessed to have a new priest who was also a Bishop but was installed as the Vicar of St Laurence. Unfortunately he took early retirement due to ill health, but we have continued in a period of stability. We have had the great pleasure of new members joining our congregation and becoming involved with church life.

The church building

St Laurence's is a Grade II* listed building and its origins date back to the 11th century. Evidence of these Norman origins can particularly be seen above the south porch door and on many external areas of the building. It was built originally with a flat roof which the Victorians re modelled into the roof you see today. On the inside there is a beautiful Lady Chapel with the main windows featuring St Elizabeth with John the Baptist, Our Lady with the baby Jesus and St Anne with Our Lady as an infant. Across the Church on the North side is the Altar of St George with the high altar facing east between the two. It was originally a chapel of ease for the rural parish of All Saints Sawley. During 1694 there was a great fire in Long Eaton and the Church evolved into the Parish Church with the later additions from the Victorian era.

Inside the Church you will find many artefacts going back to the Victorian era and beyond. There is an interesting brass plaque in the chancel which commemorates the choirboys and girls who died at an early age. The Chancel roof was decorated in 1936 by Wystan Widows and can be seen today although some restoration is needed. The re-build in the Victorian era took place between 1868 and 1869 by the architect George Edmund Street. The North Aisle, Nave and Chancel were added in the same style as the old building. It was re-opened on 26th August 1869.

Although the building is generally in good condition, both inside and externally, a considerable amount of work is needed on the roof with a total estimated cost of about £100,000. The roofing dates largely from the Victorian era and consists of clay tiles and leading and there has been considerable weathering and distortion allowing water ingress. This is a project which is being vigorously pursued and we have already raised about £40,000 although much further work is needed on this and we are working closely with the diocese. This is very much a work in progress and has evolved over the course of the project with a change in materials involving a need for a new Faculty.

There is a separate modern church hall within the churchyard with kitchen and toilet facilities which is available for hiring.



Church life

There are 74 people on the Electoral Roll and the parish has a population of about 11,000.

Worship at St Laurence is dignified and firmly in the Catholic tradition, with Sung Mass at 9.30 o'clock being our main Sunday service. The service is based on Common Worship with permitted additions from the Roman Missal and incense is used. The attendance is normally between 45 and 55. Until the Vacancy arose, Evensong and Benediction was held on the first Sunday but this is now held less frequently and as and when possible. The attendance is usually about 12 people.



In addition we have a Mass on Wednesday mornings at 10.00am and one on Fridays at 12.00 noon. Other Masses are celebrated on principal feast days and there is a full programme of services during Lent and Holy Week.

The congregation is mainly middle aged and elderly although there are typically 4 to 6 children or young people on a Sunday. Our 'Worshipping Community' as reflected in our Statistics for Mission report for 2018 is as follows:

Children (0-10)	5
Young people (11-17)	5
Adults (18-69)	23
Adults (70+)	40
Total	73



Music plays an important part in our services and we have a regular Organist, Frankie Storer, and also the services of three others. We have a Brindley and Foster organ which is generally in need of some major work. This can be found on the National Pipe Organ Register.

We have an experienced and dedicated team of **Servers** and there are usually at least 4 robed and in the sanctuary. The team includes a number of children and young people.

Occasional Offices during 2018 were as follows:-

Baptisms: 7 Funerals: 4

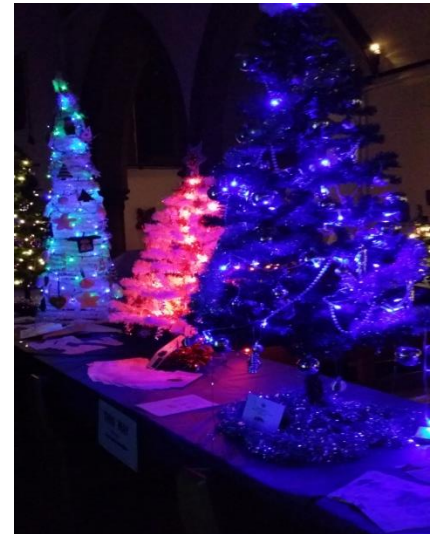
Home Communions are given on a regular basis both to the elderly in their own homes and in Residential Care Homes within the parish.

Church activities

We endeavour to have a busy social calendar, organised by a committed **Social Committee** to help with fund raising. Our regular events include the following:-

- Christmas Crib Service - generally attended by approx. 300 people
- Christmas Concert
- Christmas tree Festival
- Shrove Tuesday Supper
- Lent Soup and Rolls in aid of the ACS
- Summer Fair
- Harvest Supper
- Christian Aid Breakfast
- British Legion Poppy Appeal Concert

We find that the local community are very supportive of our large events, the Christmas Tree Festival being a good example, where we often have hundreds of locals coming into the church to see the trees. The Crib service is extremely well attended with the church being full to capacity.



There is an annual pilgrimage to the Walsingham shrine and is led by one of the clergy team.

We are conscious of the need to engage with social media and as well as our **website** (which was completely updated about 3 years ago) we have an active **Facebook** page for the Church – there is a separate one for the Youth Club. A weekly Pew sheet and news is produced which goes onto our website.



We also have a **Cleaning and Maintenance** group who look after the tidying and cleaning of the church and ornaments and the provision of flowers.

We endeavour to focus on events where there can be some wider community involvement and this is something we would like to develop further.

Outreach and community involvement

There are a number of areas in which we interact with the community and where we endeavour to reach out beyond our church congregation.

The parish has traditionally had a good relationship with **2195 Squadron, Long Eaton Air Training Corps**, being invited to provide a Chaplain/Padre. This usually involves attending the squadron one evening per month. The ATC also have one parade Mass each February on ATC Sunday when they (and the neighbouring squadron from Stapleford) join in the Parish Mass. The role of Chaplain/Padre offers a rewarding opportunity to work with teenagers and their instructors.

Because we are the main town centre church in Long Eaton, with the war memorial located next to us, we are the location for the annual **Remembrance Service** led by our clergy, and for similar civic events, and this is very well attended and is a time when as a church we are prominent in the community.

There was for a number of years a **Youth Club** at the church but this is currently in abeyance. It had about nine members, with an age range from 9 upwards. Activities included, crafts, games, football, pool, visits to local shops and fire station, cinema etc. It is hoped that this will start again before too long.

Every Friday morning, during term time, the hall is used by a **Baby and Toddler Group**. This is for young children to come along to before they go off to their Nursery School.

We have **three schools** within the parish, one of which is our church school – please see the separate bit about this in the following section. We have a good relationship with Brooklands Infant school as well as our own. Many members of our church community have been Governors in the past. Both schools are well disposed towards us and welcome being able to bring pupils along to events from time to time. For the last few years St Laurence's School have also had their end of year event at the church with family members as well as pupils being in attendance.

We are regular visitors, including for **Home Communions**, to a number of Residential Care Homes in the area and value our ministry to the elderly which extends beyond the parish to members and connections of our church community.

The church hall is available for hiring for individual community and other purposes and has been booked on some occasions by market research teams. It is also used for our Youth Club and Baby and Toddler Groups and is available for all Church Functions as and when needed.

We recognise that it is an important part of our ministry to reach out to the local community and we are constantly on the lookout for opportunities to improve and develop this further.



St Laurence Church of England Primary School

The school is part of the Derby Diocesan Academy Trust and has 213 pupils. They describe themselves as “a friendly, happy learning community”.

Because this is the church school there are of course very close links and excellent relationships and past Vicars have been school Governors. There is regular contact with the school with the previous Vicar leading worship and working closely with the Head of School who is also the RE lead.

There was an Ofsted report in January 2018 and the outcome was ‘Requiring Improvement’. There was a complete change of leadership at the school in 2017/18 and the report recognised that issues were being addressed and the leadership aspect was reflected as ‘Good’. It recognised that the school was coming out of a deep trough and was most certainly on the way up.

We suggested that the school make a contribution to this section and to get them to ask the children what sort of a person they would like to see as the next Vicar and the feedback is given below:-



Children's Comments from St Laurence Church of England Primary School

A group of 9 children met with myself. I explained the situation and asked for their comments and ideas. I wrote down exactly what the children said.

- ❖ Someone that is a happy, nice, kind person.
- ❖ Someone that likes working with children.
- ❖ Someone with a sense of humour.
- ❖ Someone with a kind heart who doesn't mind getting involved with the school and the children.
- ❖ Someone who is exciting and makes Collective Worship fun so that you look forward to them coming in.
- ❖ Someone who leads interactive Collective Worship so that children have the opportunity to get up and help and to join in.

- ❖ We want to learn but Collective Worship should be interesting. So, we would like someone that helps us to learn about God in an interesting way.
- ❖ Someone who will spend time at our school and get to know us.
- ❖ At Christmas and Easter, the new vicar could provide activities at Church that we could go to.
- ❖ We would like a new vicar that is enthusiastic, welcoming and approachable.
- ❖ Someone who is willing to visit us and come round and see what we are doing in our lessons, see how we're getting on and take an interest in our learning.
- ❖ Someone who could sometimes come into our class and read us a bible story or talk and have discussions in our Class Reflection Areas.

We felt that the school needed someone that we could get to know and who would take an interest in the children: their lessons, their learning and their achievements.

We would like the new vicar to be visible around the school and for people to have opportunities to ask relevant questions.

Though children understood the importance of being part of the church and that on many occasions teaching and services should be serious, they also wanted interactive (and fun) services so that they could feel part of the learning (where appropriate).

To finish, I would just like to say that the meeting was very productive and the children involved thoroughly enjoyed and appreciated being asked for their opinions.

Thank you.

Mrs Ronni Barker
Head of School

Parish finance

A brief summary of our financial position for the last three years is given below:

Item	2018	2017	2016
Total income	50334	66915	63430
Giving + tax reclaim	30545	35715	40133
Common Fund	20400 (89%)	20284 (100%)	20000 (100%)
Other expenses	27737	30001	32324
Surplus (Deficit)	(841)	6138	6506
Total of funds held	95635	101133	77985

From the Treasurer's Report as of 31 December 2018:

Roof Fund	£34043.61	(£6839.43 still needed to be paid in)
Joan Summers Fund	£30211.90	
Organ fund	£10412.84	
Education fund	£12675.07	

Various activities raised the following amounts: the Garden party **£1583** (**£1029** for general funds & **£554** for the Roof Fund); the Christmas tree festival made **£2556** (**£1589** for the Roof Fund and **£967** for general funds) We have managed to reclaim 2015 Gift aid which was **£3034** and we are just about to put a claim in for 2016 Gift aid.

As mentioned elsewhere we need to raise a total of about £100,000 for the roof repairs and we have had considerable success already in doing this but a further £60,000 is still needed. We are working in conjunction with the diocese on a plan to obtain further grants.

There has been some decline in both the regular giving and in our total income during the last few years and we would largely attribute this to the age profile of our congregation and to people leaving, for a variety of reasons. Our main financial focus at present is raising further funds for the necessary roof repairs but we remain conscious of the need to improve our overall financial position generally and we are looking into various ways of approaching this.

Full audited accounts can be supplied if required.

Our strengths and weaknesses

Strengths

- The maintenance of a regular pattern of worship on Sundays, weekdays and throughout the course of the Church's calendar.
- Dignified worship, with music on Sundays and use of incense, supported by a strong team of servers.
- A loyal and regular congregation.
- Strong support from the laity in all areas
- A strong social programme with good lay involvement.
- A growing involvement from families, young people and children
- The Church being in the centre of the Town
- Being involved with community events
- Annual Youth Pilgrimage attendance from our Youth Club.

Weaknesses

- A financial position which needs strengthening.
- Whilst seeing a growth we still need to see more involvement from families and Young People.
- We need to strengthen our Ministry and Mission, which will hopefully be guided by a new Priest.

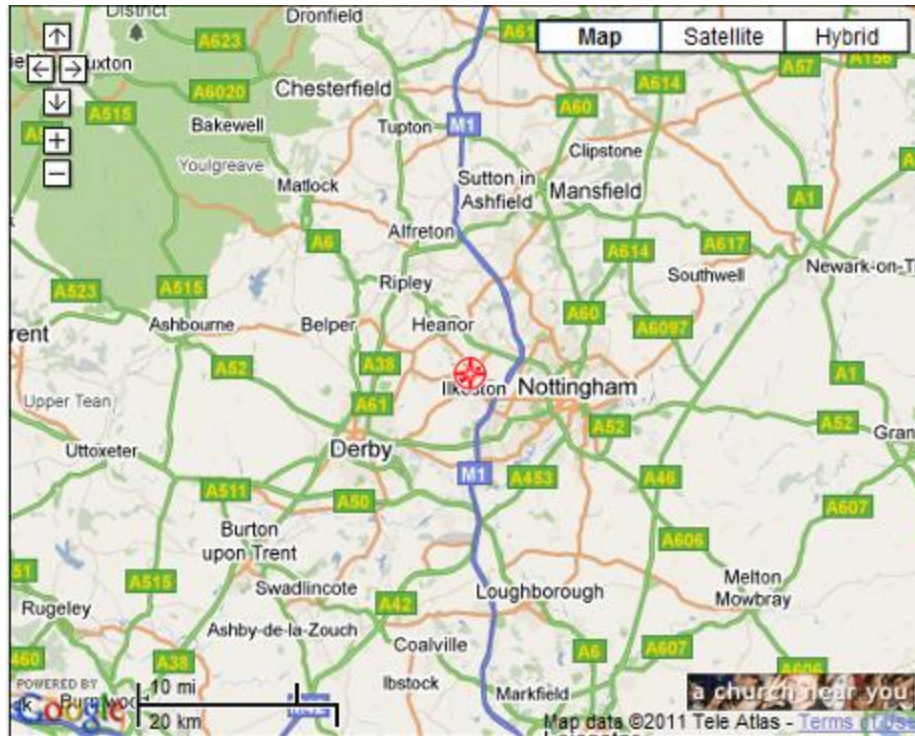
The way ahead

Whilst the celebration of the mass is central to our life at St Laurence we recognise that we have a wider pastoral mission. We are therefore seeking to develop:

- Our Church and community work: reaching out especially to the disadvantaged.
- Attracting more families and young people and local groups such as the Brownies and Guides.
- Continue work with Canaan Trust and food bank
- Care Leaders: co-ordinate care of the congregation, not just in times of illness.
- Raising the profile of the church.
- Improving our financial position.
- Using the Church Hall for local groups and Mission work and outreach

We are very much looking forward to working with a new Incumbent to help us achieve our vision, hopes and aspirations for the future.

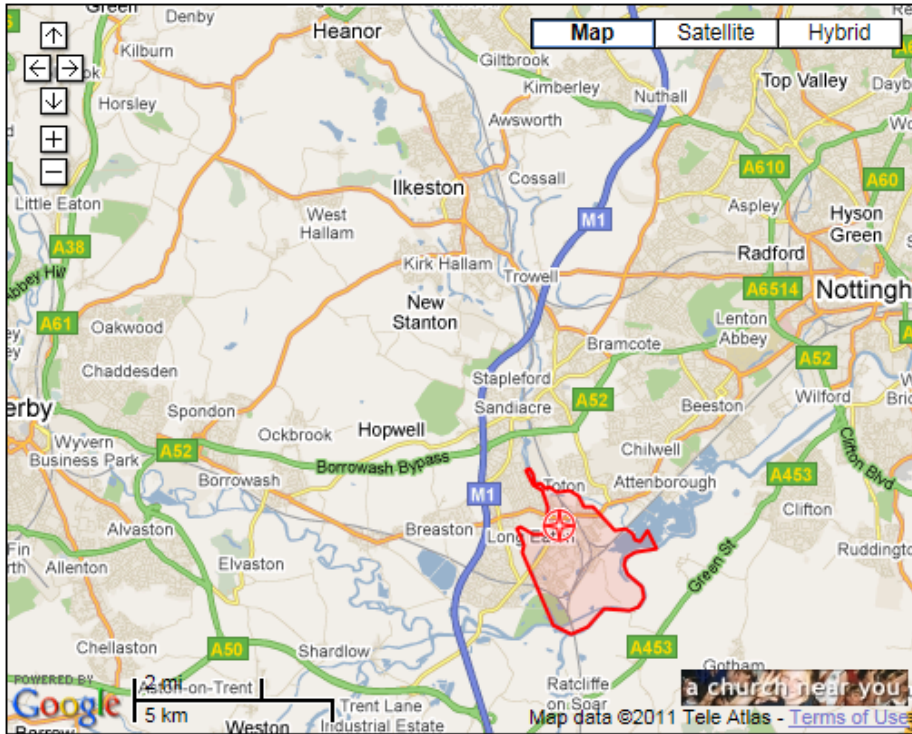
MAPS



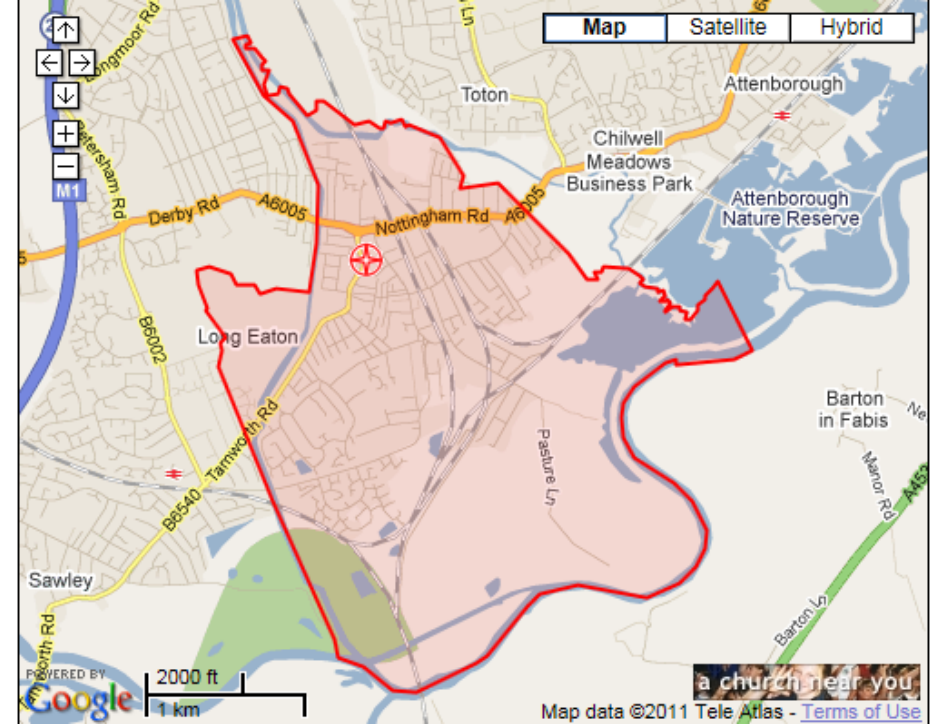
MAP SHOWING THE POSITION OF ILKESTON AND LONG EATON IN THE EAST MIDLANDS



MAP SHOWING THE POSITION OF HOLY TRINITY IN THE NOTTINGHAM /DERBY AREA



MAP SHOWING THE POSITION OF ST LAURENCE'S IN THE



PARISH MAP – ST LAURENCE'S